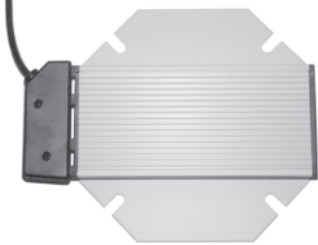


Electrical Heating Element for Chafing-Dish

Art. Nr. 7098/00X

The electrical heating elements are to be placed under round/ovale water pans.

The element is pressed on the container through four screws to achieve all over contact of both surfaces: If this contact is not complete, the heating element does not switch on and the heating results are unsatisfactory !



Electrical values of the two heating elements:

Element 7098/001

AC/DC 140-250 V

500 Watt without thermic coupling in static air with 20°C ambient temperature (this value is stamped on the element)
(Heating performance)

350 Watt with 20°C water temperature
(Start heating performance)

Surface temperature 210°C measured in non built-in status with 20°C ambient temperature.

Electric element: PTC (cold conductor)
Heating element: Aluminium, anodised
Measurements: 200 x 200 x 14 mm
Connection lead: 3 x 0,75 mm“ PVC-cable with plug, 2,5 m length
Safety class: I
Safety sort: IP 54
Weight: 1 kg
VDE certified

Operation conditions: The adjustable element 7098/002, at it's highest step, heatens quicker the cooled down water. The results of the non adjustable element 7098/001 are only satisfactory if the Chafing-Dish is kept covered as long as possible.

Both versions should be filled with pre-heated water (85°C) to accelerate the heating-up.

Warning: The electrical heating element is not to be used in the Bain Marie.

Element 7098/002

with external energy regulator*

*)From 1-9 continuously variable regulator (9 = permanent position)

AC 230 V

500 Watt maximum heating performance continuously adjustable (this value 1-9 is stamped on the element)

Surface temperature 200°C measured in non built-in status.
Limitation of the surface temperature through safety thermostat.

Electric element: flat glow heating
Heating element: Aluminium, anodised
Measurements: 200 x 200 x 14 mm
Connection lead: 3 x 0,75 mm“ PVC-cable with plug, 2,5 m length
Safety class: I
Safety sort: IP 54
Weight: 1,2 kg
VDE certified